



## Socomec Diris B - руководство по быстрому запуску

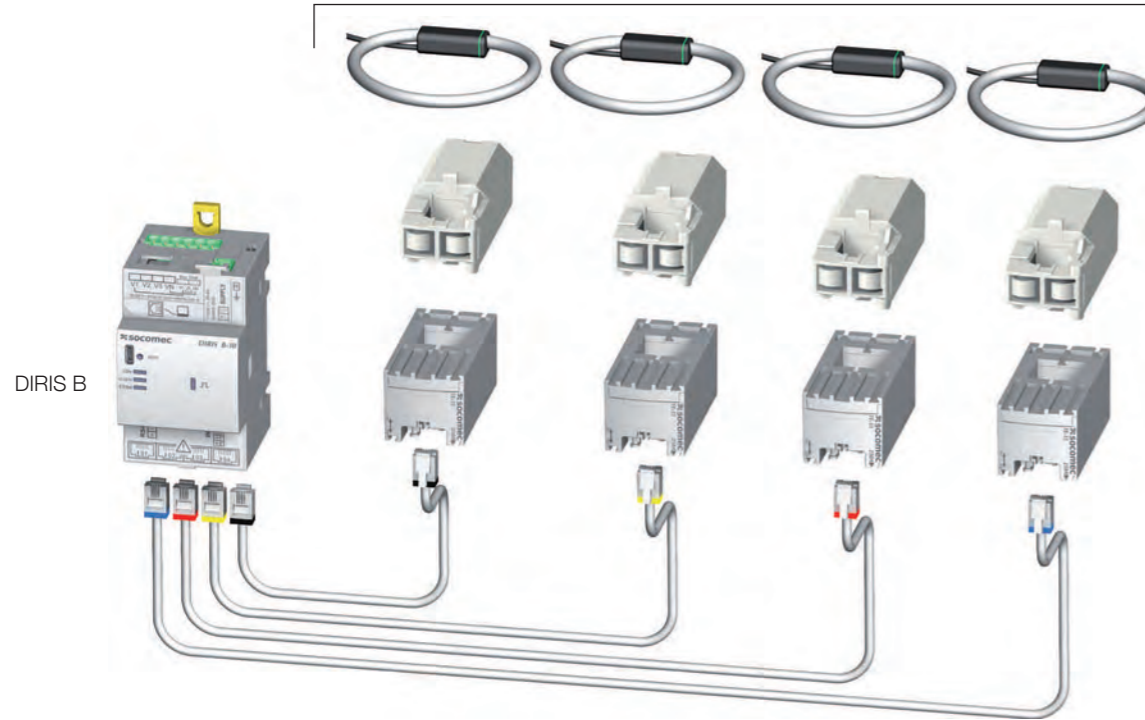
Постоянная ссылка на страницу: <https://www.uni-jet.com/catalog/commutation/izmeritelnyie-priboryi/socomec-diris-b.html>





### 3 Current sensors

Current sensors TE / TR / TF



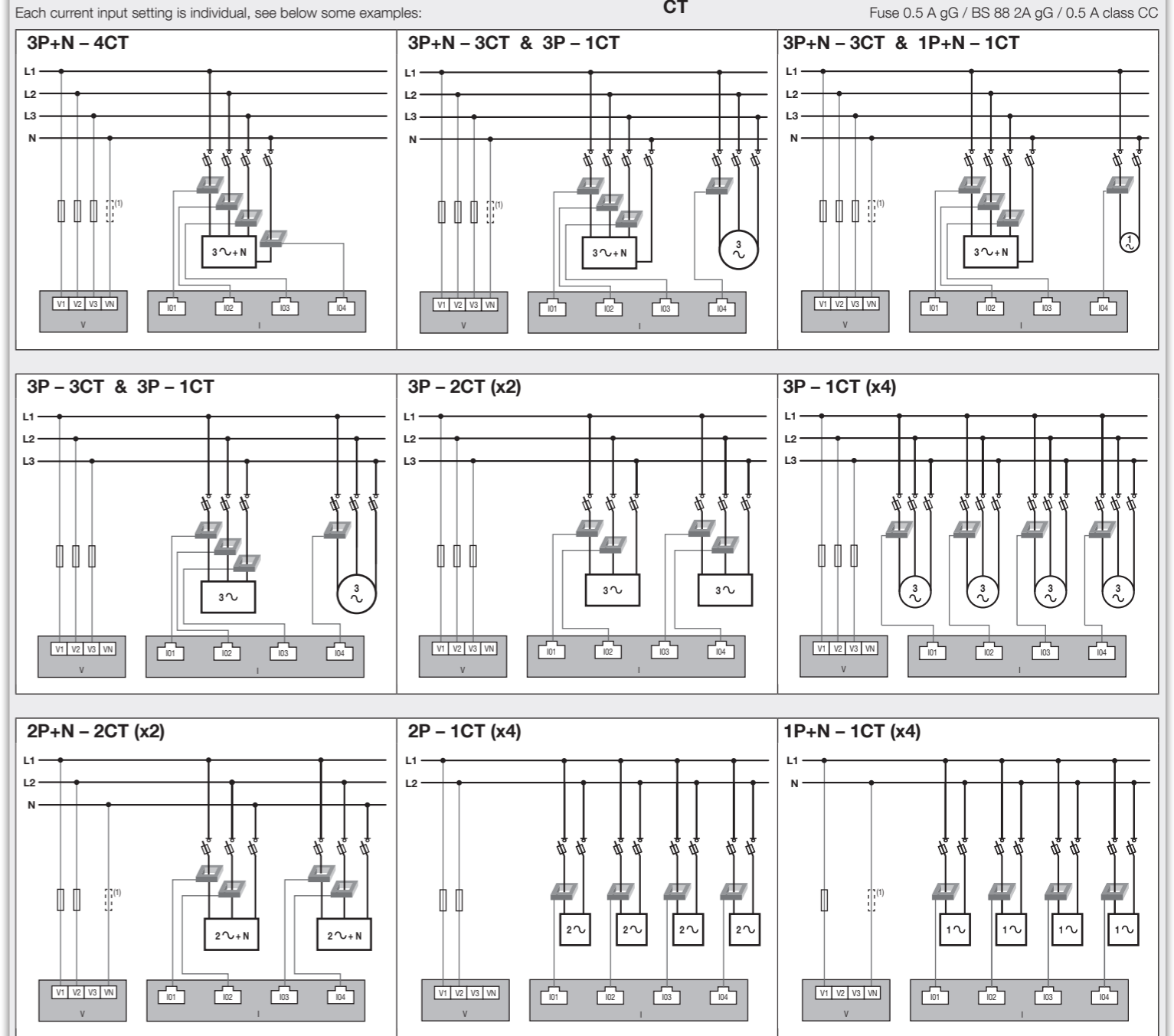
**Recommendations:**

- Use Socomec Current Sensors cables type RJ12 straight, twisted pairs, non-shielded, 300V cat.III. rated, -20 / +70 °C.
- It is recommended to mount all the current sensors with the same orientation.
- Always start with current sensor input 1.

### 6 Main network connections and loads

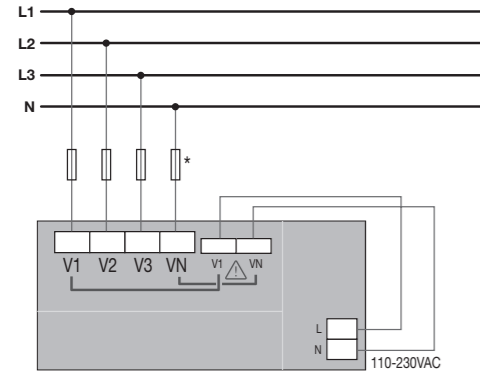
(1) See step 4

CT = Current sensor      3~ = Balanced load      3~ = Unbalanced load  
Fuse 0.5 A gG / BS 88 2A gG / 0.5 A class CC



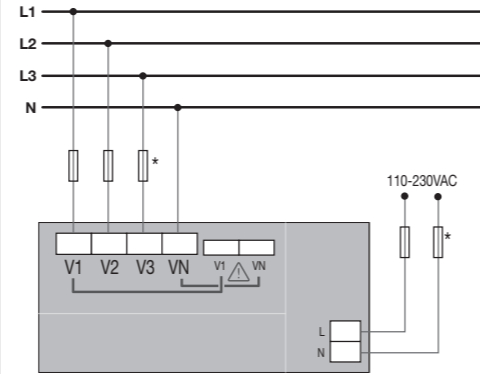
### 4 Auxiliary supply

**Self-supply**



⚠ Fuse on Neutral is mandatory for self-supply configuration.

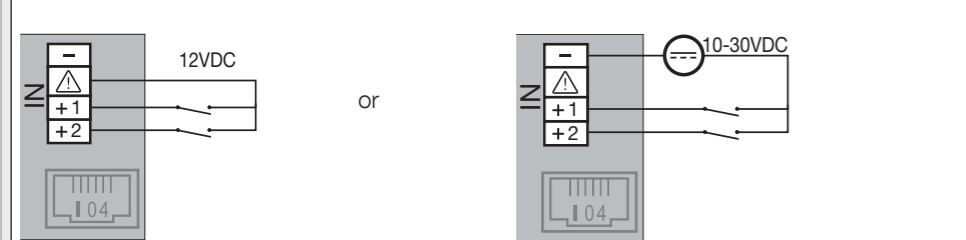
**Separate supply**



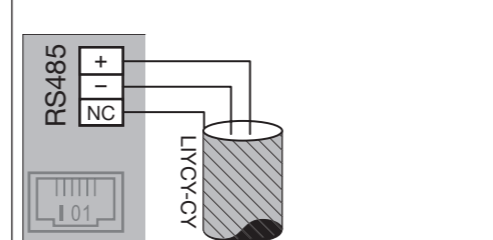
\* Fuse 0.5 A gG / BS 88 2A gG / 0.5 A class CC

\* Fuse 0.5 A gG / BS 88 2A gG / 0.5 A class CC

### 5 Inputs



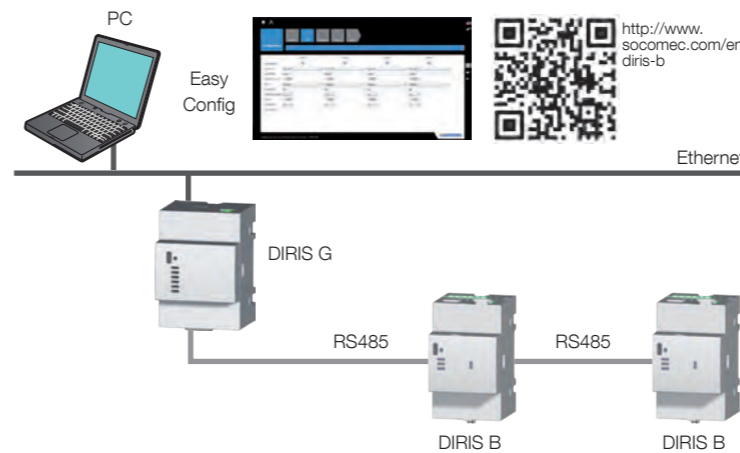
### Communication



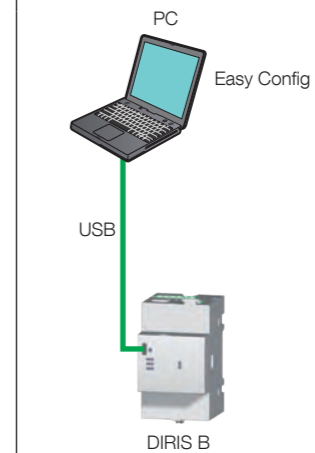
### 7 Configuration

**Easy Config Software**

**Ethernet**



**USB**



**Display DIRIS D**

**RJ9**

